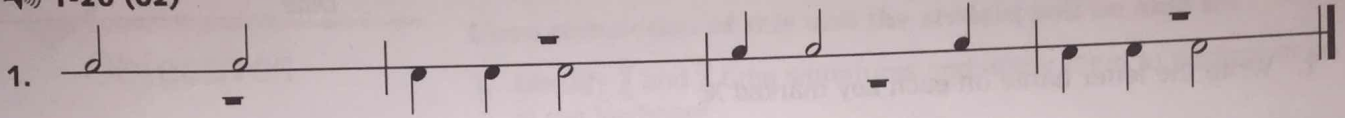


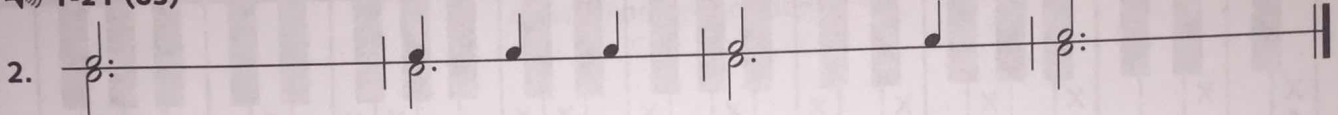
# RHYTHM READING

Tap the following rhythm patterns using RH for notes with stems going up and LH for notes with stems going down. Tap hands separately first, and then hands together, always counting aloud.

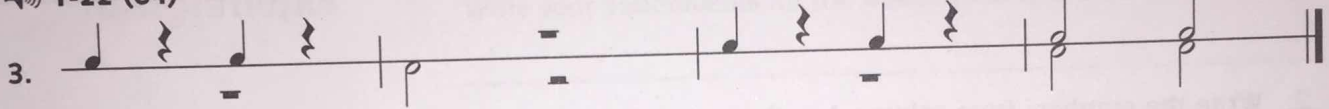
## 1-20 (62)



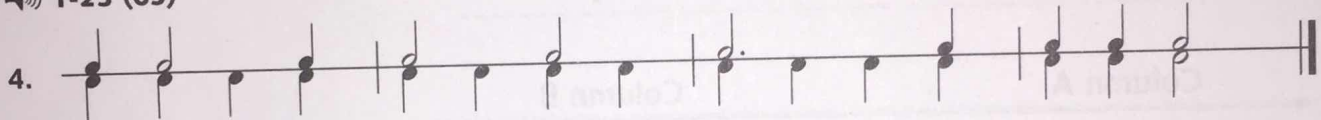
## 1-21 (63)



## 1-22 (64)



## 1-23 (65)

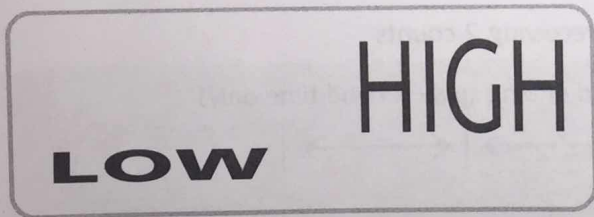


# EAR TRAINING

- Your teacher will play LOW or HIGH sounds.
  - Circle LOW if you hear LOW sounds.
  - Circle HIGH if you hear HIGH sounds.
- Your teacher will play sounds that go UP or DOWN.
  - Circle the arrow pointing up if the sounds go UP.
  - Circle the arrow pointing down if the sounds go DOWN.
- Your teacher will clap a rhythm pattern. Circle the pattern that you hear.

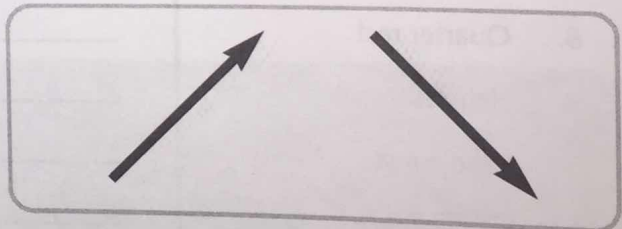
## 1-24 (66)

1.



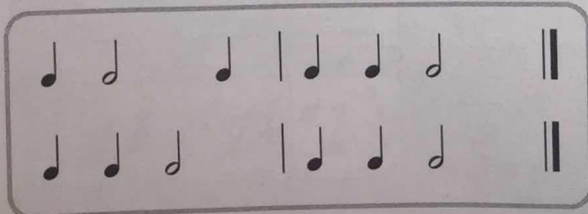
## 1-25 (67)

2.



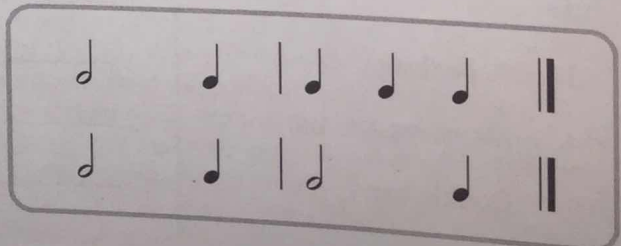
## 1-26 (68)

3a.



## 1-27 (69)

3b.

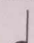


Teacher: See page 153.

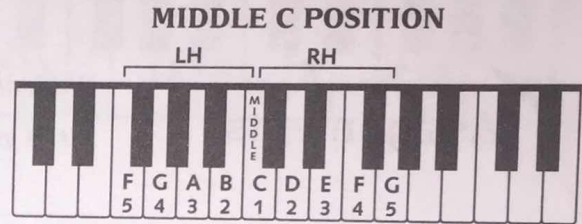
Playing in  
Right Hand  
Middle C Position

Time Signature


Music has numbers at the beginning called a **time signature**.

$\frac{4}{4}$  means 4 beats to each measure.  
 $\frac{4}{4}$  means a **QUARTER NOTE**  gets 1 beat.

READING



*All Through the Night*

 1-28 (70)

RH Middle C Position

Gentle

Traditional  
Repeat Sign:  
play again.

OPTIONAL: Play *All Through the Night* with the LH beginning with finger 2.

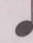
TEACHER ACCOMPANIMENT

Gentle ( $\text{♩} = 98$ )

Playing in  
Left Hand  
Middle C Position

Time Signature

**3** means 3 beats to each measure.

**4** means a **QUARTER NOTE**  gets 1 beat.

SOLO REPERTOIRE

# First Waltz

1-29 (71)

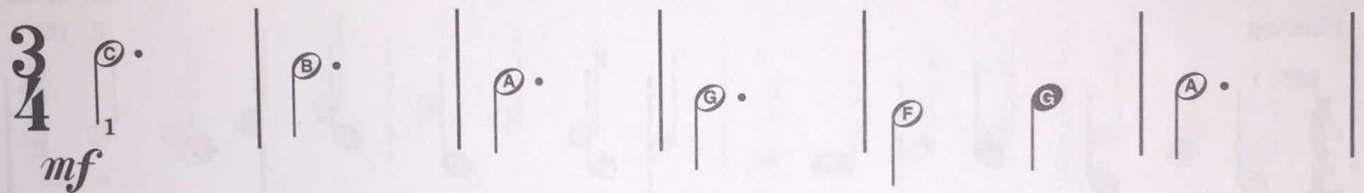
E. L. Lancaster

LH Middle C Position

Kenon D. Renfrow

Moderately fast

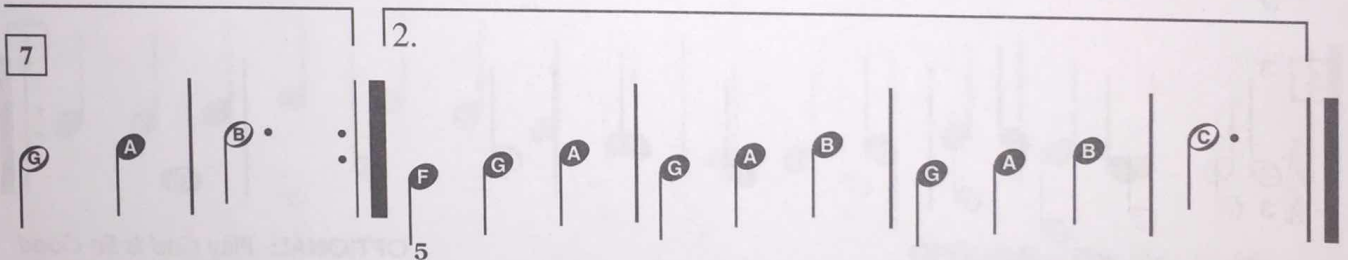
1.



**3**/**4** *mf*

7

2.

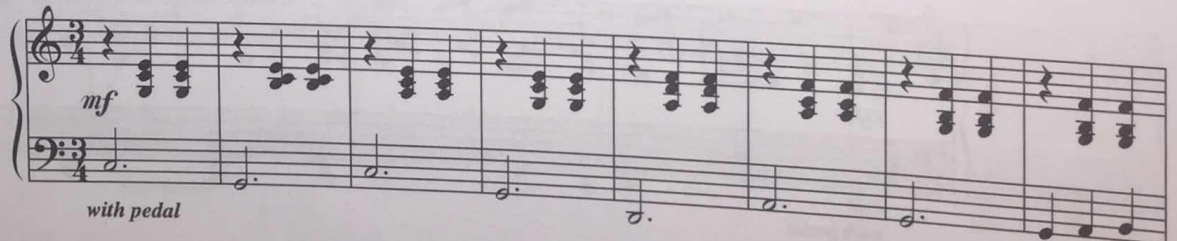


5

OPTIONAL: Play *First Waltz* with the RH beginning with finger 5.

TEACHER ACCOMPANIMENT

Moderately fast ( $\text{♩} = 190$ )



*mf*

with pedal

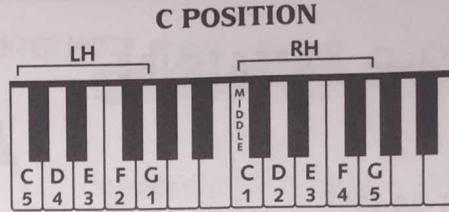
9



# Playing in C Position

1. Play *God Is So Good* with the RH using the fingering above the notes. (The RH uses the same position as Middle C Position.)
2. Play *God Is So Good* with the LH using the fingering below the notes.

## READING



1-30 (72)

C Position

# God Is So Good

Traditional

Flowing

RH 1  
4/4 C  
mf

LH 5

5 3 3

OPTIONAL: Play *God Is So Good* hands together.

## TEACHER ACCOMPANIMENT

Flowing (♩ = 96)

mf

with pedal

5

rit. 2nd time